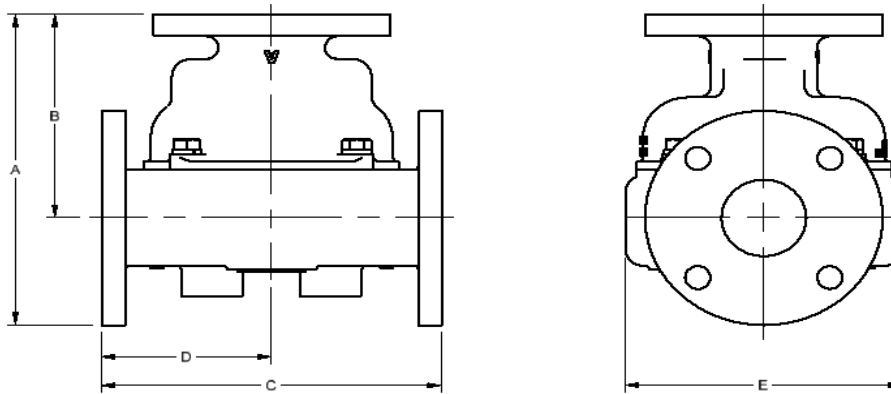


Model 6010 Thermostatic Control Valve Specifications - Standard

| Ported Valves | | | PRINCIPAL DIMENSIONS UNITS - in | | | | | Weight (lb) |
|---------------|-----------------|----------|---------------------------------|------|------|-------|------|-------------|
| MODEL NUMBER | CONNECTION SIZE | Material | A | B | C | D | E | |
| *6010 | 6" Class 125 | A | 24.8 | 10.0 | 19.3 | 9.6 | 16.0 | 220.5 |
| *6010 | 6" Class 150 | B/BL | 24.5 | 9.9 | 19.0 | 9.5 | | 219.7 |
| | | D | 24.8 | 10.0 | 19.3 | 9.6 | | 184.1 |
| | | S/SS | 24.8 | 10.0 | 19.3 | 9.6 | | 215.8 |
| *6010U | PN10/16 | A | 24.9 | 10.0 | 19.3 | 9.6 | | 220.0 |
| | PN10 | B/BL FF | 24.4 | 9.8 | 18.8 | 9.4 | | 238.1 |
| | PN16 | B/BL FF | 24.6 | 9.9 | 19.0 | 9.5 | | 243.1 |
| | PN10/16 | B/BL RF | 24.6 | 9.9 | 19.0 | 9.5 | | 240.1 |
| | PN10/16 | D | 24.4 | 9.8 | 18.8 | 9.4 | | 208.5 |
| PN10/16 | S/SS | 24.6 | 9.9 | 18.9 | 9.4 | 206.1 | | |

REPLACE * WITH BODY MATERIAL TYPE: A=CAST IRON, B=BRONZE, BL=LOW LEAD BRONZE D=DUCTILE, S=STEEL, SS=STAINLESS
(WEIGHTS ARE APPROXIMATE FOR BASE VALVE ONLY)



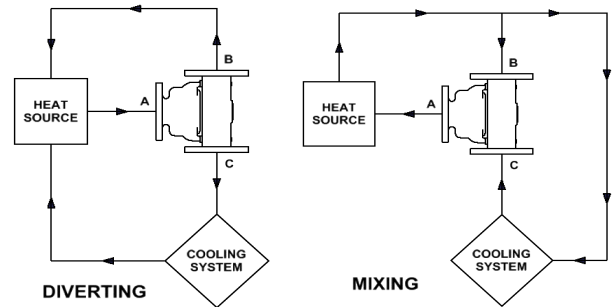
STEEL, STAINLESS STEEL, AND METRIC FLANGED VALVES ARE RAISED FACE
UNLESS OTHERWISE NOTED

| Pressure Ratings | |
|------------------|-----|
| Material | PSI |
| A | 175 |
| B/BL | 195 |
| D | 225 |
| S (Class 150) | 250 |
| SS (Class 150) | 225 |

| Standard Service Kits | |
|-----------------------|---------------|
| MODEL | SEAL MATERIAL |
| 6000-XXX | Buna-N |
| 6000V-XXX | Viton |
| 6000E-XXX | Neoprene |

REPLACE XXX WITH
SET-POINT TEMPERATURE °F
(One thermostat per valve)

Application Schematics



Consult FPE representative for further information

www.FPEvalves.com

EUROPE, MIDDLE EAST,
AFRICA, ASIA + PACIFIC
+44 1733 206 678
emeaap@FPEvalves.com

AMERICAS
+1 262 548 6220
americas@FPEvalves.com

CHINA
+86 0519 8158 0102
china@FPEvalves.com

Copyright 2017 FPE.