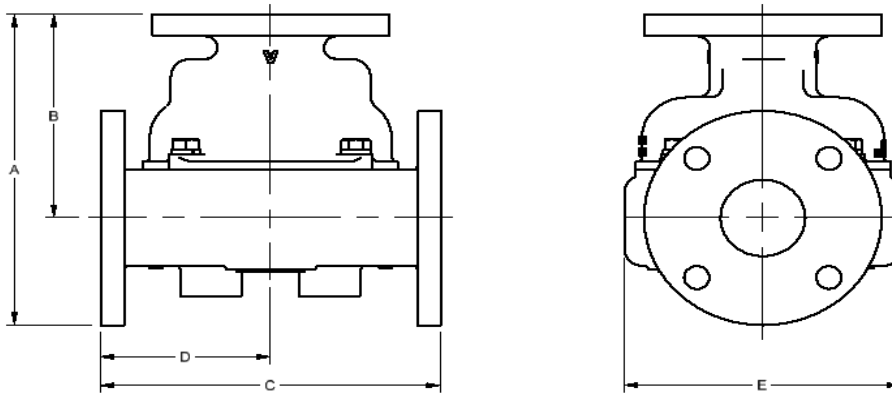


Model 6010 Thermostatic Control Valve Specifications - Metric

Ported Valves			PRINCIPAL DIMENSIONS UNITS - mm					Weight (kg)
MODEL NUMBER	CONNECTION SIZE	Material	A	B	C	D	E	
*6010	6" Class 125	A	628.7	254.0	489.0	244.5	406.4	100.0
*6010	6" Class 150	B/BL	622.3	252.2	482.6	241.3		99.7
		D	628.7	254.0	489.0	244.5		83.5
		S/SS	628.7	253.2	489.0	244.5		97.9
*6010U	PN10/16	A	632.5	254.5	490.0	245.0		99.8
	PN10	B/BL FF	620.8	248.7	478.3	239.1		108.0
	PN16	B/BL FF	624.8	250.4	482.3	241.2		110.3
	PN10/16	B/BL RF	624.8	250.4	482.3	241.2		108.9
	PN10/16	D	618.7	247.7	476.3	238.1		94.6
	PN10/16	S/SS	624.8	251.2	478.8	239.4		93.5

REPLACE * WITH BODY MATERIAL TYPE: A=CAST IRON, B=BRONZE, BL=LOW LEAD BRONZE D=DUCTILE, S=STEEL, SS=STAINLESS
(WEIGHTS ARE APPROXIMATE FOR BASE VALVE ONLY)



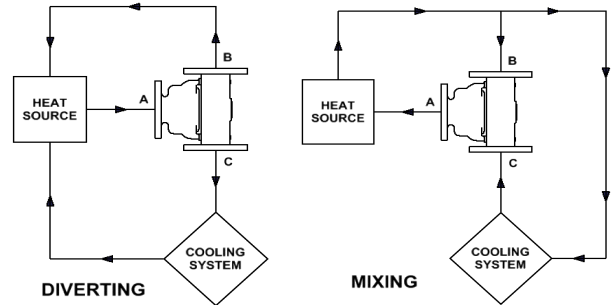
STEEL, STAINLESS STEEL, AND METRIC FLANGED VALVES ARE RAISED FACE
UNLESS OTHERWISE NOTED

Pressure Ratings	
Material	bar
A	12.1
B/BL	13.4
D	15.5
S (Class 150)	17.2
SS (Class 150)	15.5

Standard Service Kits	
MODEL	SEAL MATERIAL
6000-XXX	Buna-N
6000V-XXX	Viton
6000E-XXX	Neoprene

REPLACE XXX WITH
SET-POINT TEMPERATURE °F
(One thermostat per valve)

Application Schematics



Consult FPE representative for further information

www.FPEvalves.com

EUROPE, MIDDLE EAST,
AFRICA, ASIA + PACIFIC
+44 1733 206 678
emeaap@FPEvalves.com

AMERICAS
+1 262 548 6220
americas@FPEvalves.com

CHINA
+86 0519 8158 0102
china@FPEvalves.com

Copyright 2017 FPE.