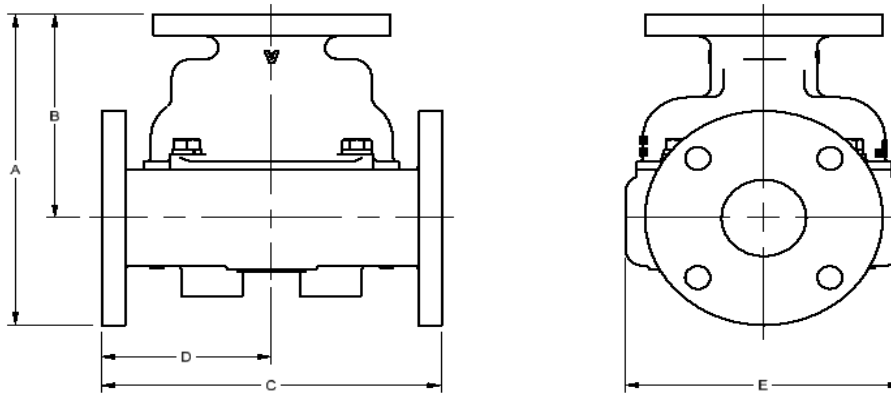


# Model 6010 Thermostatic Control Valve Specifications - Standard

Ported Valves			PRINCIPAL DIMENSIONS UNITS - in					Weight (lb)
MODEL NUMBER	CONNECTION SIZE	Material	A	B	C	D	E	
*6010	6" Class 125	A	24.8	10.0	19.3	9.6	16.0	220.5
*6010	6" Class 150	B/BL	24.5	9.9	19.0	9.5		219.7
		D	24.8	10.0	19.3	9.6		184.1
		S/SS	24.8	10.0	19.3	9.6		215.8
*6010U	PN10/16	A	24.9	10.0	19.3	9.6		220.0
	PN10	B/BL FF	24.4	9.8	18.8	9.4		238.1
	PN16	B/BL FF	24.6	9.9	19.0	9.5		243.1
	PN10/16	B/BL RF	24.6	9.9	19.0	9.5		240.1
	PN10/16	D	24.4	9.8	18.8	9.4		208.5
PN10/16	S/SS	24.6	9.9	18.9	9.4	206.1		

REPLACE \* WITH BODY MATERIAL TYPE: A=CAST IRON, B=BRONZE, BL=LOW LEAD BRONZE D=DUCTILE, S=STEEL, SS=STAINLESS  
(WEIGHTS ARE APPROXIMATE FOR BASE VALVE ONLY)



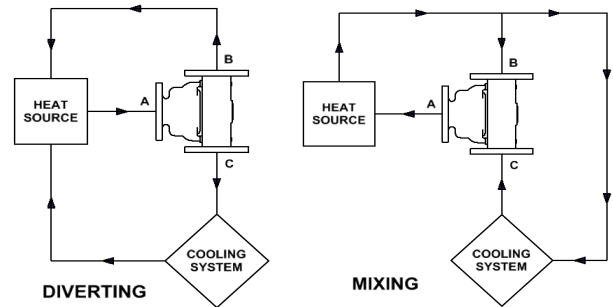
STEEL, STAINLESS STEEL, AND METRIC FLANGED VALVES ARE RAISED FACE  
UNLESS OTHERWISE NOTED

Pressure Ratings	
Material	PSI
A	175
B/BL	195
D	225
S (Class 150)	250
SS (Class 150)	225
S (Class 300)	670
SS (Class 300)	590

Standard Service Kits	
MODEL	SEAL MATERIAL
6000-XXX	Buna-N
6000V-XXX	Viton
6000E-XXX	Neoprene

REPLACE XXX WITH  
SET-POINT TEMPERATURE °F  
(One thermostat per valve)

### Application Schematics



Consult FPE representative for further information

[www.FPEvalves.com](http://www.FPEvalves.com)

EUROPE, MIDDLE EAST,  
AFRICA, ASIA + PACIFIC  
+44 1733 206 678  
[emeaap@FPEvalves.com](mailto:emeaap@FPEvalves.com)

AMERICAS  
+1 262 548 6220  
[americas@FPEvalves.com](mailto:americas@FPEvalves.com)

CHINA  
+86 0519 8158 0102  
[china@FPEvalves.com](mailto:china@FPEvalves.com)

Copyright 2017 FPE.