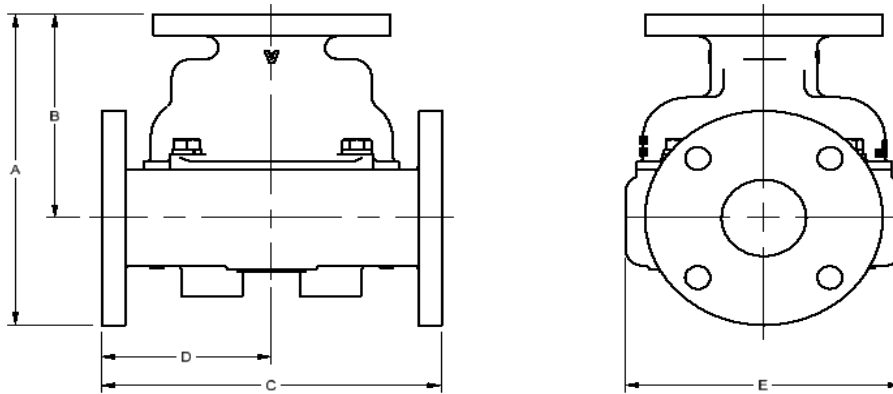


# Model 5010 Thermostatic Control Valve Specifications - Standard

Ported Valves			PRINCIPAL DIMENSIONS UNITS - in					Weight (lb)
MODEL NUMBER	CONNECTION SIZE	Material	A	B	C	D	E	
*5010	5" Class 125	A	19.5	9.5	19.3	9.6	14.0	155
*5010	5" Class 150	B/BL	19.4	9.3	19.1	9.6		170
		D	19.5	9.5	19.3	9.6		145
		S/SS	19.5	9.5	19.3	9.6		155
*5010U	PN10/16	A	18.8	9.6	19.4	9.7		165
	PN10	B/BL FF	19.1	9.3	18.8	9.4		162
	PN16	B/BL FF	19.3	9.4	19.1	9.6		170
	PN10/16	B/BL RF	19.2	9.4	19.0	9.5		163
	PN10/16	D	19.2	9.3	18.9	9.4		132
	PN10/16	S/SS	19.4	9.4	19.1	9.6		150

REPLACE \* WITH BODY MATERIAL TYPE: A=CAST IRON, B=BRONZE, BL=LOW LEAD BRONZE D=DUCTILE, S=STEEL, SS=STAINLESS  
(WEIGHTS ARE APPROXIMATE FOR BASE VALVE ONLY)



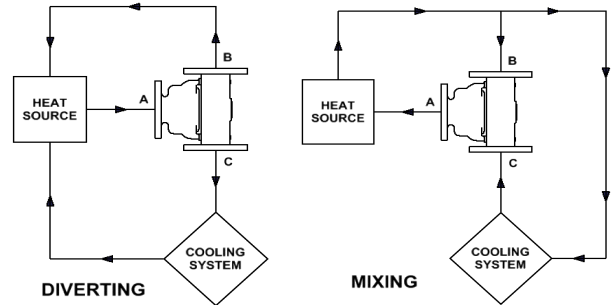
STEEL, STAINLESS STEEL, AND METRIC FLANGED VALVES ARE RAISED FACE  
UNLESS OTHERWISE NOTED

Pressure Ratings	
Material	PSI
A	175
B/BL	195
D	225
S (Class 150)	250
SS (Class 150)	225
S (Class 300)	670
SS (Class 300)	590

Standard Service Kits	
MODEL	SEAL MATERIAL
5000-XXX	Buna-N
5000V-XXX	Viton
5000E-XXX	Neoprene

REPLACE XXX WITH  
SET-POINT TEMPERATURE °F  
(One thermostat per valve)

## Application Schematics



Consult FPE representative for further information

[www.FPEvalves.com](http://www.FPEvalves.com)

EUROPE, MIDDLE EAST,  
AFRICA, ASIA + PACIFIC  
+44 1733 206 678  
[emeaap@FPEvalves.com](mailto:emeaap@FPEvalves.com)

AMERICAS  
+1 262 548 6220  
[americas@FPEvalves.com](mailto:americas@FPEvalves.com)

CHINA  
+86 0519 8158 0102  
[china@FPEvalves.com](mailto:china@FPEvalves.com)

Copyright 2017 FPE.