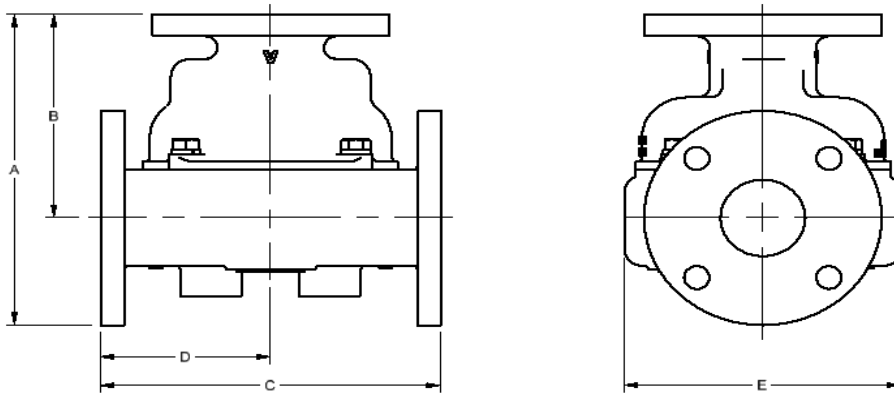


Model 5010 Thermostatic Control Valve Specifications - Metric

Ported Valves			PRINCIPAL DIMENSIONS UNITS - mm					Weight (kg)
MODEL NUMBER	CONNECTION SIZE	Material	A	B	C	D	E	
*5010	5" Class 125	A	495.3	241.6	489.0	244.5	355.6	70.3
*5010	5" Class 150	B/BL	492.3	236.7	485.6	242.8		77.1
		D	495.3	241.6	489.0	244.5		65.8
		S/SS	495.3	241.6	489.0	244.5		70.3
*5010U	PN10/16	A	478.0	244.9	493.3	246.6		74.8
	PN10	B/BL FF	485.6	235.7	477.3	238.6		73.5
	PN16	B/BL FF	489.5	239.5	485.4	242.7		77.1
	PN10/16	B/BL RF	487.4	237.7	481.3	240.7		73.9
	PN10/16	D	486.4	236.7	479.3	239.6		59.9
	PN10/16	S/SS	493.5	239.5	485.4	242.7		68.0

REPLACE * WITH BODY MATERIAL TYPE: A=CAST IRON, B=BRONZE, BL=LOW LEAD BRONZE D=DUCTILE, S=STEEL, SS=STAINLESS
(WEIGHTS ARE APPROXIMATE FOR BASE VALVE ONLY)



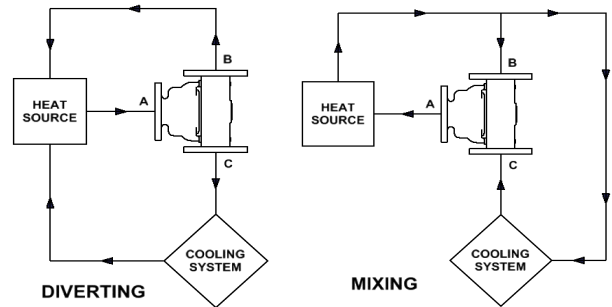
STEEL, STAINLESS STEEL, AND METRIC FLANGED VALVES ARE RAISED FACE
UNLESS OTHERWISE NOTED

Pressure Ratings	
Material	bar
A	12.1
B/BL	13.4
D	15.5
S (Class 150)	17.2
SS (Class 150)	15.5
S (Class 300)	46.2
SS (Class 300)	40.7

Standard Service Kits	
MODEL	SEAL MATERIAL
5000-XXX	Buna-N
5000V-XXX	Viton
5000E-XXX	Neoprene

REPLACE XXX WITH
SET-POINT TEMPERATURE °F
(One thermostat per valve)

Application Schematics



Consult FPE representative for further information

www.FPEvalves.com

EUROPE, MIDDLE EAST,
AFRICA, ASIA + PACIFIC
+44 1733 206 678
emeaap@FPEvalves.com

AMERICAS
+1 262 548 6220
americas@FPEvalves.com

CHINA
+86 0519 8158 0102
china@FPEvalves.com

Copyright 2017 FPE.