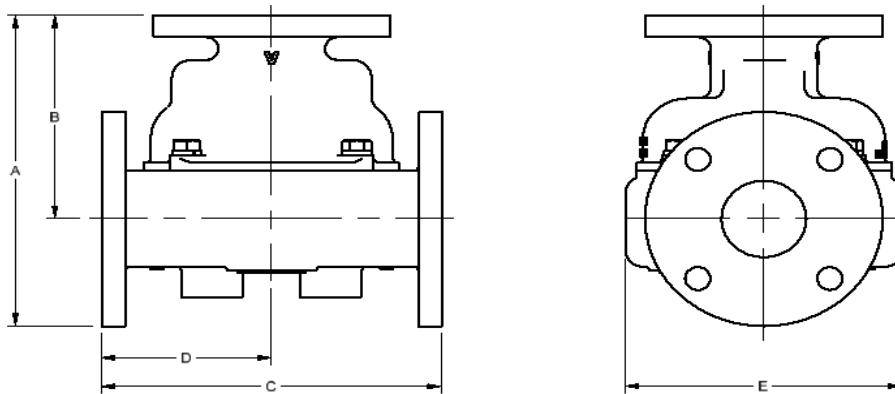


# Model 4010 Thermostatic Control Valve Specifications - Standard

Ported Valves			PRINCIPAL DIMENSIONS UNITS - in					Weight (lb)
MODEL NUMBER	CONNECTION SIZE	Material	A	B	C	D	E	
*4010	4" Class 125	A	13.2	8.7	15.9	7.9	11.5	113.6
*4010	4" Class 150	B/BL	13.0	8.5	15.6	7.8		124.8
		D	13.2	8.7	15.9	7.9		107.5
		S/SS	13.2	8.7	15.9	7.9	11.0	112.7
*4010U	PN10/16	A	13.0	8.7	15.9	8.0	11.5	108.5
	PN10	B/BL FF	12.7	8.4	15.3	7.6		112.9
	PN16	B/BL FF	12.9	8.5	15.6	7.8		119.4
	PN10/16	B/BL RF	12.9	8.5	15.6	7.8		120.3
	PN10/16	D	12.8	8.5	15.6	7.8		95.8
	PN10/16	S/SS	13.0	8.7	15.6	7.8		104.2
*4010X	4" Class 300	S/SS	13.7	8.7	15.9	7.9	11.0	138.6

REPLACE \* WITH BODY MATERIAL TYPE: A=CAST IRON, B=BRONZE, BL=LOW LEAD BRONZE D=DUCTILE, S=STEEL, SS=STAINLESS  
(WEIGHTS ARE APPROXIMATE FOR BASE VALVE ONLY)



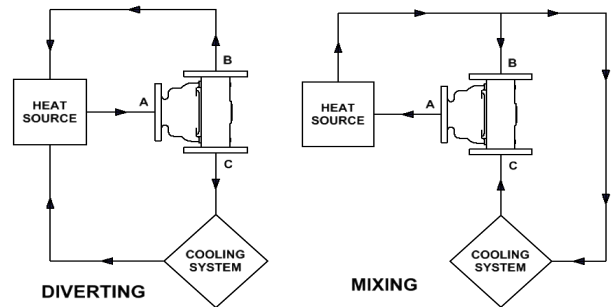
STEEL, STAINLESS STEEL, AND METRIC FLANGED VALVES ARE RAISED FACE  
UNLESS OTHERWISE NOTED

Pressure Ratings	
Material	PSI
A	175
B/BL	195
D	225
S (Class 150)	250
SS (Class 150)	225
S (Class 300)	670
SS (Class 300)	590

Standard Service Kits	
MODEL	SEAL MATERIAL
4000-XXX	Buna-N
4000V-XXX	Viton
4000E-XXX	Neoprene

REPLACE XXX WITH  
SET-POINT TEMPERATURE °F  
(One thermostat per valve)

### Application Schematics



Consult FPE representative for further information

[www.FPEvalves.com](http://www.FPEvalves.com)

EUROPE, MIDDLE EAST,  
AFRICA, ASIA + PACIFIC  
+44 1733 206 678  
[emeaap@FPEvalves.com](mailto:emeaap@FPEvalves.com)

AMERICAS  
+1 262 548 6220  
[americas@FPEvalves.com](mailto:americas@FPEvalves.com)

CHINA  
+86 0519 8158 0102  
[china@FPEvalves.com](mailto:china@FPEvalves.com)

Copyright 2017 FPE.