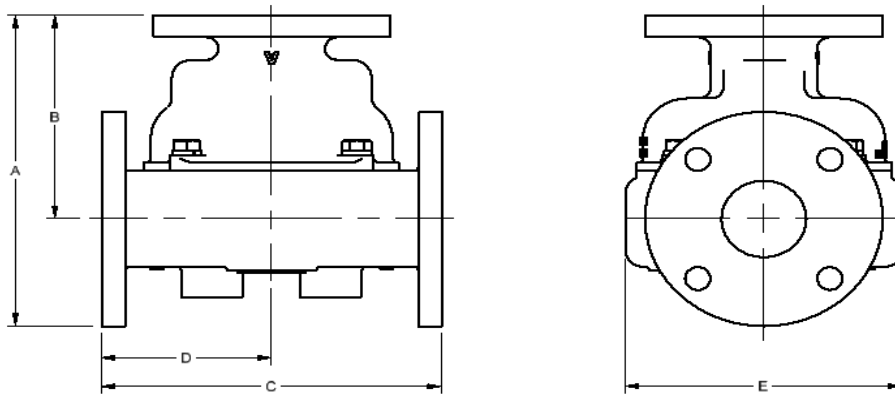


# Model 4010 Thermostatic Control Valve Specifications - Metric

Ported Valves			PRINCIPAL DIMENSIONS UNITS - mm					Weight (kg)
MODEL NUMBER	CONNECTION SIZE	Material	A	B	C	D	E	
*4010	4" Class 125	A	335.3	221.0	403.9	200.7	292.1	51.5
*4010	4" Class 150	B/BL	330.2	215.9	396.2	198.1		56.6
		D	335.3	221.0	403.9	200.7		48.8
		S/SS	335.3	221.0	403.9	200.7	279.4	51.1
*4010U	PN10/16	A	330.2	221.0	403.9	203.2	292.1	49.2
	PN10	B/BL FF	322.6	213.4	388.6	193.0		51.2
	PN16	B/BL FF	327.7	215.9	396.2	198.1		54.2
	PN10/16	B/BL RF	327.7	215.9	396.2	198.1		54.6
	PN10/16	D	325.1	215.9	396.2	198.1		43.5
	PN10/16	S/SS	330.2	221.0	396.2	198.1		47.3
*4010X	4" Class 300	S/SS	348.0	221.0	403.9	200.7	279.4	62.9

REPLACE \* WITH BODY MATERIAL TYPE: A=CAST IRON, B=BRONZE, BL=LOW LEAD BRONZE D=DUCTILE, S=STEEL, SS=STAINLESS  
(WEIGHTS ARE APPROXIMATE FOR BASE VALVE ONLY)



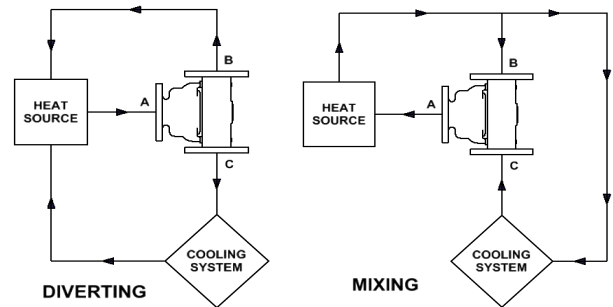
STEEL, STAINLESS STEEL, AND METRIC FLANGED VALVES ARE RAISED FACE  
UNLESS OTHERWISE NOTED

Pressure Ratings	
Material	bar
A	12.1
B/BL	13.4
D	15.5
S (Class 150)	17.2
SS (Class 150)	15.5
S (Class 300)	46.2
SS (Class 300)	40.7

Standard Service Kits	
MODEL	SEAL MATERIAL
4000-XXX	Buna-N
4000V-XXX	Viton
4000E-XXX	Neoprene

REPLACE XXX WITH  
SET-POINT TEMPERATURE °F  
(One thermostat per valve)

### Application Schematics



Consult FPE representative for further information

[www.FPEvalves.com](http://www.FPEvalves.com)

EUROPE, MIDDLE EAST,  
AFRICA, ASIA + PACIFIC  
+44 1733 206 678  
[emeaap@FPEvalves.com](mailto:emeaap@FPEvalves.com)

AMERICAS  
+1 262 548 6220  
[americas@FPEvalves.com](mailto:americas@FPEvalves.com)

CHINA  
+86 0519 8158 0102  
[china@FPEvalves.com](mailto:china@FPEvalves.com)

Copyright 2017 FPE.