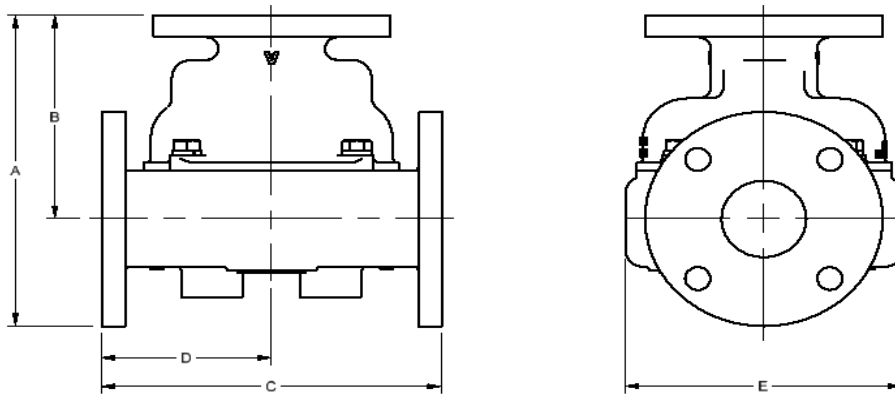


Model 3010 Thermostatic Control Valve Specifications - Standard

Ported Valves			PRINCIPAL DIMENSIONS UNITS - in					Weight (lb)
MODEL NUMBER	CONNECTION SIZE	Material	A	B	C	D	E	
*3010	3" Class 125	A	10.6	6.8	10.5	5.3	8.0	55.2
*3010	3" Class 150	B/BL	10.6	6.8	10.5	5.3		64.6
		D	10.8	7.0	10.9	5.4		57.6
		S/SS	10.6	6.8	10.5	5.3		59.1
*3010U	PN10/16	A	10.8	6.9	10.6	5.3		55.2
	PN10	B/BL FF	10.5	6.6	10.0	5.0		56.8
	PN16	B/BL FF	10.8	6.9	10.6	5.3		66.5
	PN10/16	B/BL RF	10.6	6.7	10.4	5.2		62.0
	PN10/16	D	10.7	6.8	10.5	5.3		53.5
	PN10/16	S/SS	10.5	6.7	10.2	5.1		54.4
*3010X	3" Class 300	S/SS	11.0	6.8	10.5	5.3	8.3	69.4

REPLACE * WITH BODY MATERIAL TYPE: A=CAST IRON, B=BRONZE, BL=LOW LEAD BRONZE D=DUCTILE, S=STEEL, SS=STAINLESS
(WEIGHTS ARE APPROXIMATE FOR BASE VALVE ONLY)



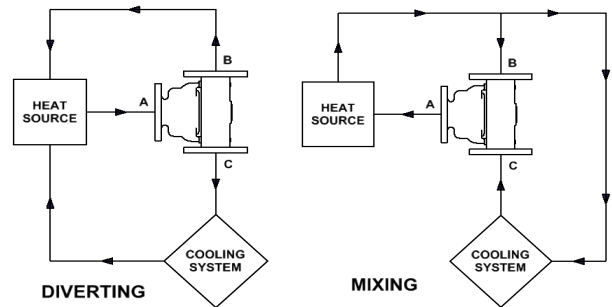
STEEL, STAINLESS STEEL, AND METRIC FLANGED VALVES ARE RAISED FACE
UNLESS OTHERWISE NOTED

Pressure Ratings	
Material	PSI
A	175
B/BL	195
D	225
S (Class 150)	250
SS (Class 150)	225
S (Class 300)	670
SS (Class 300)	590

Standard Service Kits	
MODEL	SEAL MATERIAL
3000-XXX	Buna-N
3000V-XXX	Viton
3000E-XXX	Neoprene

REPLACE XXX WITH
SET-POINT TEMPERATURE °F
(One thermostat per valve)

Application Schematics



Consult FPE representative for further information

www.FPEvalves.com

EUROPE, MIDDLE EAST,
AFRICA, ASIA + PACIFIC
+44 1733 206 678
emeaap@FPEvalves.com

AMERICAS
+1 262 548 6220
americas@FPEvalves.com

CHINA
+86 0519 8158 0102
china@FPEvalves.com

Copyright 2017 FPE.