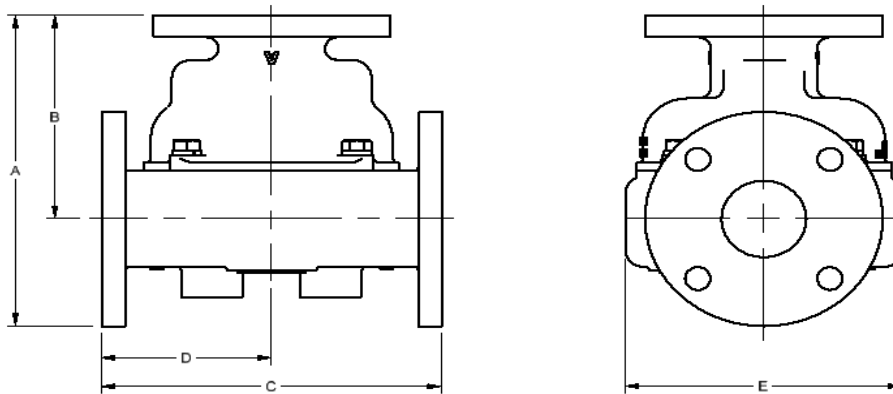


# Model 3010 Thermostatic Control Valve Specifications - Metric

Ported Valves			PRINCIPAL DIMENSIONS UNITS - mm					Weight (kg)
MODEL NUMBER	CONNECTION SIZE	Material	A	B	C	D	E	
*3010	3" Class 125	A	268.1	172.9	266.7	133.4	203.2	25.0
*3010	3" Class 150	B/BL	268.1	172.9	266.7	133.4		29.3
		D	273.8	178.6	276.4	138.2		26.1
		S/SS	269.0	173.7	266.7	133.4		26.8
*3010U	PN10/16	A	273.9	174.0	268.5	134.2		25.0
	PN10	B/BL FF	266.8	166.9	254.5	127.3		25.8
	PN16	B/BL FF	273.9	174.0	268.5	134.2		30.2
	PN10/16	B/BL RF	269.9	169.9	264.4	132.2		28.1
	PN10/16	D	272.9	173.0	266.7	133.4		24.3
	PN10/16	S/SS	267.6	169.2	259.1	129.5		24.7
*3010X	3" Class 300	S/SS	278.5	173.7	266.7	133.4	209.6	31.5

REPLACE \* WITH BODY MATERIAL TYPE: A=CAST IRON, B=BRONZE, BL=LOW LEAD BRONZE D=DUCTILE, S=STEEL, SS=STAINLESS  
(WEIGHTS ARE APPROXIMATE FOR BASE VALVE ONLY)



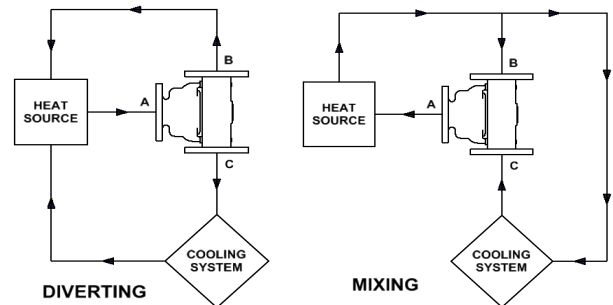
STEEL, STAINLESS STEEL, AND METRIC FLANGED VALVES ARE RAISED FACE  
UNLESS OTHERWISE NOTED

Pressure Ratings	
Material	bar
A	12.1
B/BL	13.4
D	15.5
S (Class 150)	17.2
SS (Class 150)	15.5
S (Class 300)	46.2
SS (Class 300)	40.7

Standard Service Kits	
MODEL	SEAL MATERIAL
3000-XXX	Buna-N
3000V-XXX	Viton
3000E-XXX	Neoprene

REPLACE XXX WITH  
SET-POINT TEMPERATURE °F  
(One thermostat per valve)

### Application Schematics



Consult FPE representative for further information

[www.FPEvalves.com](http://www.FPEvalves.com)

EUROPE, MIDDLE EAST,  
AFRICA, ASIA + PACIFIC  
+44 1733 206 678  
[emeaap@FPEvalves.com](mailto:emeaap@FPEvalves.com)

AMERICAS  
+1 262 548 6220  
[americas@FPEvalves.com](mailto:americas@FPEvalves.com)

CHINA  
+86 0519 8158 0102  
[china@FPEvalves.com](mailto:china@FPEvalves.com)

Copyright 2017 FPE.