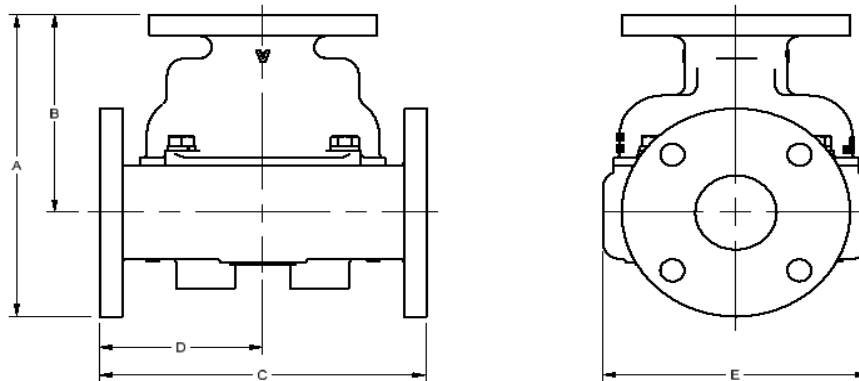


Model 2510 Thermostatic Control Valve Specifications - Standard

Ported Valves			PRINCIPAL DIMENSIONS UNITS - in					Weight (lb)
MODEL NUMBER	CONNECTION SIZE	Material	A	B	C	D	E	
A2510	2 1/2" Class 125	A	10.1	6.6	10.0	5.0	8.1	47.3
*2510	2 1/2" Class 150	B/BL	10.1	6.6	10.0	5.0		56.0
		D	10.3	6.8	10.4	5.2		51.6
		S/SS	10.3	6.8	10.4	5.2		51.1
*2510U	PN10/16	A	10.4	6.7	10.2	5.1		49.6
	PN10	B/BL FF	10.1	6.5	9.7	4.8		52.1
	PN16	B/BL FF	10.4	6.7	10.2	5.1		60.9
	PN10/16	B/BL RF	10.2	6.6	9.9	4.9		54.3
	PN10/16	D	10.3	6.7	10.1	5.1		48.2
	PN10/16	S/SS	10.3	6.7	10.0	5.0		47.4
*2510X	2 1/2" Class 300	S/SS	10.5	6.8	10.5	5.3	8.0	55.5

REPLACE * WITH BODY MATERIAL TYPE: A=CAST IRON, B=BRONZE, BL=LOW LEAD BRONZE D=DUCTILE, S=STEEL, SS=STAINLESS
(WEIGHTS ARE APPROXIMATE FOR BASE VALVE ONLY)



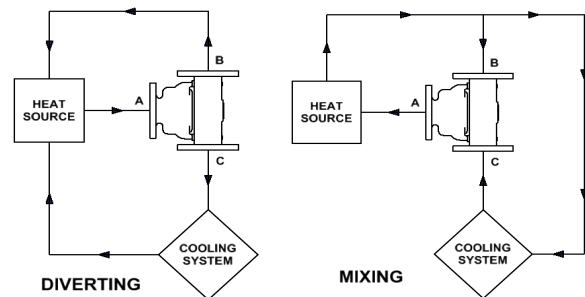
STEEL, STAINLESS STEEL, AND METRIC FLANGED VALVES ARE RAISED FACE
UNLESS OTHERWISE NOTED

Pressure Ratings	
Material	PSI
A	175
B/BL	195
D	225
S (Class 150)	250
SS (Class 150)	225
S (Class 300)	670
SS (Class 300)	590

Standard Service Kits	
MODEL	SEAL MATERIAL
2500-XXX	Buna-N
2500V-XXX	Viton
2500E-XXX	Neoprene

REPLACE XXX WITH
SET-POINT TEMPERATURE °F
(One thermostat per valve)

Application Schematics



Consult FPE representative for further information

www.FPEvalves.com

EUROPE, MIDDLE EAST,
AFRICA, ASIA + PACIFIC
+44 1733 206 678
emeaap@FPEvalves.com

AMERICAS
+1 262 548 6220
americas@FPEvalves.com

CHINA
+86 0519 8158 0102
china@FPEvalves.com

Copyright 2017 FPE.