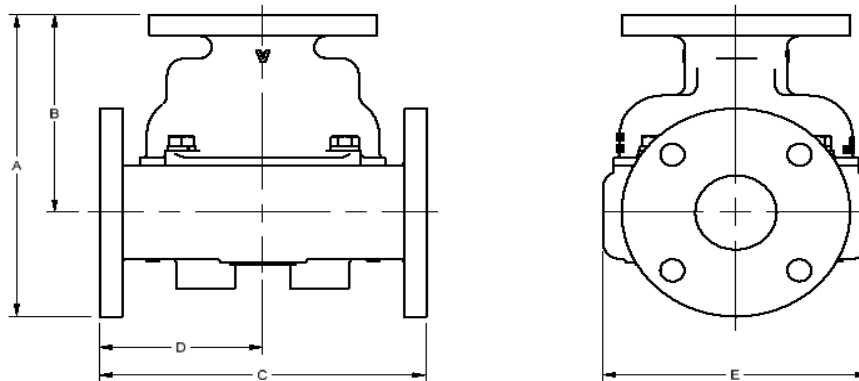


Model 2510 Thermostatic Control Valve Specifications - Metric

| Ported Valves | | | PRINCIPAL DIMENSIONS UNITS - mm | | | | | Weight (kg) |
|---------------|------------------|----------|---------------------------------|-------|-------|-------|-------|-------------|
| MODEL NUMBER | CONNECTION SIZE | Material | A | B | C | D | E | |
| A2510 | 2 1/2" Class 125 | A | 257.0 | 168.1 | 254.0 | 127.0 | 206.5 | 21.5 |
| *2510 | 2 1/2" Class 150 | B/BL | 257.0 | 168.1 | 254.0 | 127.0 | | 25.4 |
| | | D | 261.9 | 173.0 | 263.7 | 131.8 | | 23.4 |
| | | S/SS | 262.6 | 173.7 | 263.7 | 131.8 | | 23.2 |
| *2510U | PN10/16 | A | 263.4 | 170.9 | 259.1 | 129.5 | | 22.5 |
| | PN10 | B/BL FF | 256.3 | 163.8 | 245.1 | 122.6 | | 23.6 |
| | PN16 | B/BL FF | 263.4 | 170.9 | 259.1 | 129.5 | | 27.6 |
| | PN10/16 | B/BL RF | 259.4 | 166.9 | 251.2 | 125.6 | | 24.6 |
| | PN10/16 | D | 262.4 | 169.9 | 257.0 | 128.5 | | 21.9 |
| | PN10/16 | S/SS | 261.8 | 169.7 | 255.0 | 127.5 | | 21.5 |
| *2510X | 2 1/2" Class 300 | S/SS | 266.7 | 171.5 | 266.7 | 133.4 | 203.2 | 25.2 |

REPLACE * WITH BODY MATERIAL TYPE: A=CAST IRON, B=BRONZE, BL=LOW LEAD BRONZE D=DUCTILE, S=STEEL, SS=STAINLESS
(WEIGHTS ARE APPROXIMATE FOR BASE VALVE ONLY)



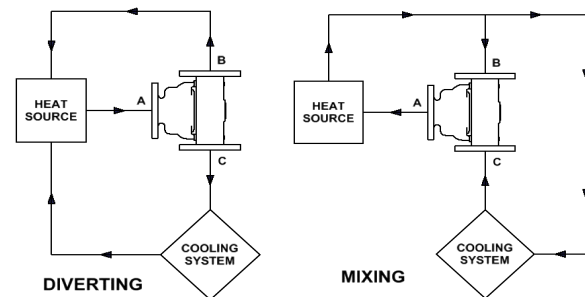
STEEL, STAINLESS STEEL, AND METRIC FLANGED VALVES ARE RAISED FACE
UNLESS OTHERWISE NOTED

| Pressure Ratings | |
|------------------|------|
| Material | bar |
| A | 12.1 |
| B/BL | 13.4 |
| D | 15.5 |
| S (Class 150) | 17.2 |
| SS (Class 150) | 15.5 |
| S (Class 300) | 46.2 |
| SS (Class 300) | 40.7 |

| Standard Service Kits | |
|-----------------------|---------------|
| MODEL | SEAL MATERIAL |
| 2500-XXX | Buna-N |
| 2500V-XXX | Viton |
| 2500E-XXX | Neoprene |

REPLACE XXX WITH
SET-POINT TEMPERATURE °F
(One thermostat per valve)

Application Schematics



Consult FPE representative for further information

www.FPEvalves.com

EUROPE, MIDDLE EAST,
AFRICA, ASIA + PACIFIC
+44 1733 206 678
emeaap@FPEvalves.com

AMERICAS
+1 262 548 6220
americas@FPEvalves.com

CHINA
+86 0519 8158 0102
china@FPEvalves.com

Copyright 2017 FPE.