

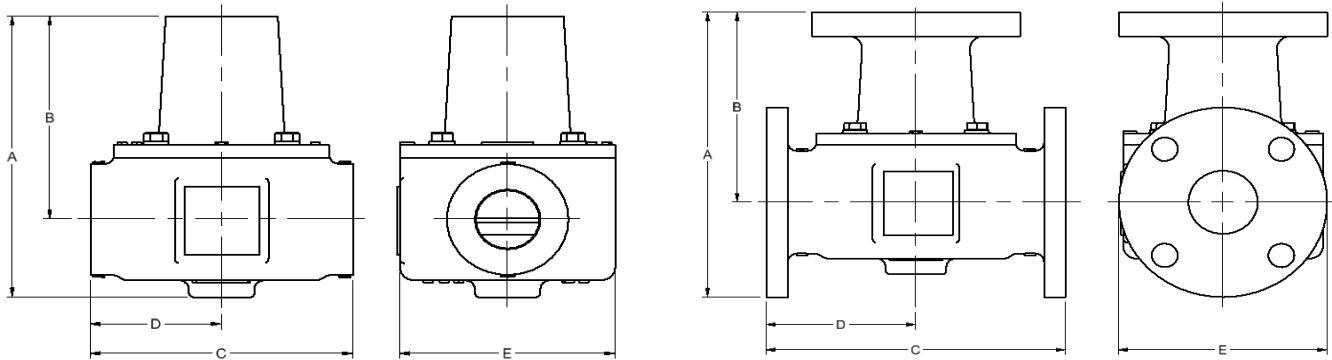
# Model 2012 Thermostatic Valve Specifications - Standard

Ported Valves			PRINCIPAL DIMENSIONS UNITS - in					Weight - lb			
MODEL NUMBER	CONNECTION SIZE	Material	A	B	C	D	E	A	B/BL	D	S/SS
*2012-1	1 1/2" NPT	A/B/BL D/S/SS	8.3	5.9	7.0	7.5	5.8	20.8	25.2	20.6	22.6
*2012	2" NPT							19.7	23.7	19.4	21.0
*2012-1B	1 1/2" BSPT							20.8	25.2	20.6	22.6
*2012B	2" BSPT							19.7	23.7	19.4	21.0
*2012-1A	1 1/2" BSPP							20.9	25.2	20.6	22.6
*2012A	2" BSPP							20.3	24.5	20.0	21.9
*2012J24	SAE-24							20.9	25.1	20.5	22.5
*2012J32	SAE-32							19.1	23.0	18.8	20.6

Socket Weld Valves			PRINCIPAL DIMENSIONS UNITS - in					Weight - lb	
MODEL NUMBER	CONNECTION SIZE	Material	A	B	C	D	E	S/SS	
*2012-1F48	1 1/2", 1 1/2" BORE	S/SS	8.3	5.9	7.0	7.5	5.8	22.5	
*2012F48	2", 1 1/2" BORE	S/SS						21.8	
*2012F64	2", 2" BORE	S/SS						21.0	

Flanged Valves			PRINCIPAL DIMENSIONS UNITS - in					Weight - lb	
MODEL NUMBER	CONNECTION SIZE	Material	A	B	C	D	E		
*F2012	2" CLASS 125	A	8.9	5.9	8.6	4.3	6.0	31.6	
		B/BL	8.9	5.9	8.6	4.3	6.0	38.2	
	2" CLASS 150	D	9.0	6.0	8.9	4.4	6.0	33.4	
		S/SS	8.9	5.9	8.9	4.4	6.0	35.9	
*F2012U	2" METRIC FLANGE PN10/16	A	9.2	6.0	9.0	4.5	6.3	34.8	
		B/BL (FF)	8.9	5.8	8.4	4.2	6.3	37.1	
		B/BL (RF)	9.0	5.9	8.6	4.3	6.3	38.8	
		D	9.1	6.0	8.9	4.4	6.3	33.4	
		S/SS	9.0	5.9	8.9	4.4	6.3	36.3	
*F2012X	2" CLASS 300	S/SS	9.1	5.9	8.9	4.4	6.5	40.3	

REPLACE \* WITH BODY MATERIAL TYPE: A=CAST IRON, B=BRONZE, BL=LOW LEAD BRONZE D=DUCTILE, S=STEEL, SS=STAINLESS  
(WEIGHTS ARE APPROXIMATE FOR BASE VALVE ONLY)



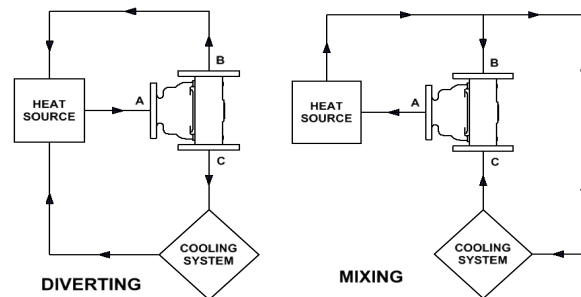
STEEL, STAINLESS STEEL, AND METRIC FLANGED VALVES ARE RAISED FACE, UNLESS OTHERWISE NOTED

Pressure Ratings	
Material (Ported)	PSI
A	150
AL	150
B	180
D	225
S	670
SS	590
Material (Flanged)	PSI
AF (Class 125)	175
BF (Class 150)	195
DF (Class 150)	225
S (Class 150)	250
SS (Class 150)	225
S (Class 300)	670
SS (Class 300)	590

Standard Service Kits	
MODEL	SEAL MATERIAL
2000-XXX	Buna-N
2000V-XXX	Viton
2000E-XXX	Neoprene

REPLACE XXX WITH SET-POINT TEMPERATURE °F (One thermostat per valve)

### Application Schematics



Consult FPE representative for further information

[www.FPEvalves.com](http://www.FPEvalves.com)

EUROPE, MIDDLE EAST,  
AFRICA, ASIA + PACIFIC  
+44 1733 206 678  
[emeaap@FPEvalves.com](mailto:emeaap@FPEvalves.com)

AMERICAS  
+1 262 548 6220  
[americas@FPEvalves.com](mailto:americas@FPEvalves.com)

CHINA  
+86 0519 8158 0102  
[china@FPEvalves.com](mailto:china@FPEvalves.com)

Copyright 2017 FPE.