

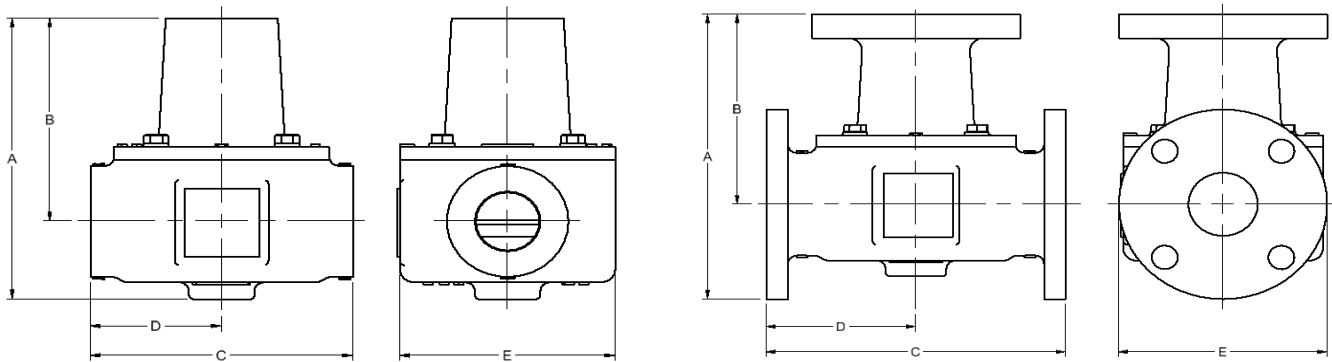
# Model 2012 Thermostatic Valve Specifications - Metric

Ported Valves			PRINCIPAL DIMENSIONS UNITS - mm					Weight - kg			
MODEL NUMBER	CONNECTION SIZE	Material	A	B	C	D	E	A	B/BL	D	S/SS
*2012-1	1 1/2" NPT	A/B/BL D/S/SS	209.6	150.9	177.8	190.5	146.1	9.4	11.4	9.3	10.3
*2012	2" NPT							8.9	10.8	8.8	9.5
*2012-1B	1 1/2" BSPT							9.4	11.4	9.3	10.3
*2012B	2" BSPT							8.9	10.8	8.8	9.5
*2012-1A	1 1/2" BSPP							9.5	11.4	9.3	10.3
*2012A	2" BSPP							9.2	11.1	9.1	9.9
*2012J24	SAE-24							9.5	11.4	9.3	10.2
*2012J32	SAE-32							8.7	10.4	8.5	9.3

Socket Weld Valves			PRINCIPAL DIMENSIONS UNITS - mm					Weight - kg	
MODEL NUMBER	CONNECTION SIZE	Material	A	B	C	D	E	S/SS	
*2012-1F48	1 1/2", 1 1/2" BORE	S/SS	209.6	150.9	177.8	190.5	146.1	10.2	
*2012F48	2", 1 1/2" BORE	S/SS						9.9	
*2012F64	2", 2" BORE	S/SS						9.5	

Flanged Valves			PRINCIPAL DIMENSIONS UNITS - mm					Weight - kg	
MODEL NUMBER	CONNECTION SIZE	Material	A	B	C	D	E	S/SS	
*F2012	2" CLASS 125	A	225.4	149.1	219.2	109.6	152.4	14.3	
		B/BL	225.4	149.1	219.2	109.6	152.4	17.3	
	2" CLASS 150	D	228.6	152.4	225.6	112.8	152.4	15.1	
		S/SS	225.4	149.1	225.4	112.7	152.4	16.3	
*F2012U	2" METRIC FLANGE PN10/16	A	232.8	153.4	227.6	113.8	158.8	15.8	
		B/BL (FF)	225.7	146.3	213.4	106.7	158.8	16.8	
		B/BL (RF)	228.7	149.4	219.5	109.7	158.8	17.6	
		D	231.8	152.4	225.6	112.8	158.8	15.1	
		S/SS	227.5	149.1	225.4	112.7	158.8	16.5	
*F2012X	2" CLASS 300	S/SS	231.8	149.1	225.4	112.7	165.1	18.3	

REPLACE \* WITH BODY MATERIAL TYPE: A=CAST IRON, B=BRONZE, BL=LOW LEAD BRONZE D=DUCTILE, S=STEEL, SS=STAINLESS  
(WEIGHTS ARE APPROXIMATE FOR BASE VALVE ONLY)



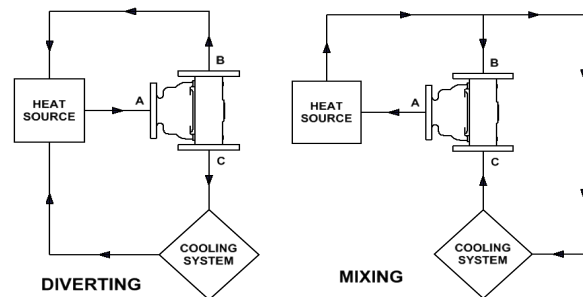
STEEL, STAINLESS STEEL, AND METRIC FLANGED VALVES ARE RAISED FACE, UNLESS OTHERWISE NOTED

Pressure Ratings	
Material (Ported)	bar
A	10.3
AL	10.3
B	12.4
D	15.5
S	46.2
SS	40.7
Material (Flanged)	bar
AF (Class 125)	12.1
BF (Class 150)	13.4
DF (Class 150)	15.5
S (Class 150)	17.2
SS (Class 150)	15.5
S (Class 300)	46.2
SS (Class 300)	40.7

Standard Service Kits	
MODEL	SEAL MATERIAL
2000-XXX	Buna-N
2000V-XXX	Viton
2000E-XXX	Neoprene

REPLACE XXX WITH SET-POINT TEMPERATURE °F (One thermostat per valve)

### Application Schematics



Consult FPE representative for further information

[www.FPEvalves.com](http://www.FPEvalves.com)

EUROPE, MIDDLE EAST,  
AFRICA, ASIA + PACIFIC  
+44 1733 206 678  
[emeaap@FPEvalves.com](mailto:emeaap@FPEvalves.com)

AMERICAS  
+1 262 548 6220  
[americas@FPEvalves.com](mailto:americas@FPEvalves.com)

CHINA  
+86 0519 8158 0102  
[china@FPEvalves.com](mailto:china@FPEvalves.com)