

Model 1010-1210 Thermostatic Control Valve Specifications - Metric

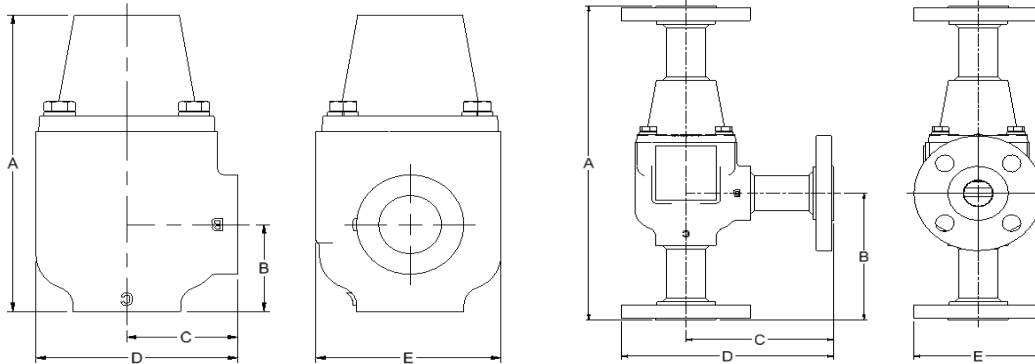
| Ported Valves | | | PRINCIPAL DIMENSIONS UNITS - mm | | | | | Weight - kg | | | | |
|---------------|-----------------|------------------|---------------------------------|------|------|------|------|-------------|-----|-----|-----|------|
| MODEL NUMBER | CONNECTION SIZE | Material | A | B | C | D | E | A | AL | B | D | S/SS |
| *1210 | 1/2 NPT | A/B/BL D/S/SS | 152.4 | 45.7 | 53.3 | 96.5 | 88.9 | 3.2 | 1.4 | 3.8 | 3.1 | 3.4 |
| *1210B | 1/2 BSPT | | | | | | | | | | | |
| *1110 | 3/4 NPT | | | | | | | | | | | |
| *1110B | 3/4 BSPT | | | | | | | | | | | |
| *1010 | 1 NPT | | | | | | | | | | | |
| *1010B | 1 BSPT | | | | | | | | | | | |
| *1210A | 1/2 BSPP | | 160.0 | 48.3 | 55.9 | 99.1 | | 3.3 | 1.5 | 3.9 | 3.3 | 3.5 |
| *1110A | 3/4 BSPP | | | | | | | | | | | |
| *1010A | 1 BSPP | | | | | | | | | | | |
| *1010J8 | SAE-8 | | | | | | | | | | | |
| *1010J12 | SAE-12 | | | | | | | | | | | |
| *1010J16 | SAE-16 | | | | | | | | | | | |

REPLACE * WITH BODY MATERIAL: A=CAST IRON, AL= ALUMINUM, B= BRONZE, D=DUCTILE, S=STEEL, SS=STAINLESS (WEIGHTS ARE APPROXIMATE)

| Socket Weld Valves | | | PRINCIPAL DIMENSIONS UNITS - mm | | | | | Weight - kg |
|--------------------|------------------|----------|---------------------------------|------|------|------|------|-------------|
| MODEL NUMBER | CONNECTION SIZE | Material | A | B | C | D | E | S/SS |
| *1010F16 | 1/2" SOCKET WELD | S/SS | 154.9 | 48.3 | 53.3 | 96.5 | 88.9 | 3.4 |
| *1010F24 | 3/4" SOCKET WELD | | | | | | | |
| *1010F32 | 1" SOCKET WELD | | | | | | | |

| Flanged Valves | | | PRINCIPAL DIMENSIONS UNITS - mm | | | | | Weight - kg |
|----------------|-------------------|----------|---------------------------------|-------|-------|-------|-------|-------------|
| MODEL NUMBER | CONNECTION SIZE | Material | A | B | C | D | E | S/SS |
| SF1210 | 1/2" CLASS 150 RF | S | 300.0 | 121.4 | 126.2 | 180.2 | 109.2 | 4.9 |
| SF1210X | 1/2" CLASS 300 RF | | 314.2 | 128.5 | 133.3 | 195.2 | 124.5 | 5.8 |
| SF1110 | 3/4" CLASS 150 RF | | 298.5 | 120.7 | 125.4 | 174.6 | 99.1 | 5.6 |
| SF1110X | 3/4" CLASS 300 RF | | 314.2 | 128.5 | 133.3 | 192.0 | 116.8 | 7.3 |
| SF1010 | 1" CLASS 150 RF | | 297.1 | 120.0 | 124.7 | 169.2 | 88.9 | 6.4 |
| SF1010X | 1" CLASS 300 RF | | 311.2 | 127.0 | 131.8 | 179.4 | 96.5 | 8.2 |
| SSF1210 | 1/2" CLASS 150 RF | SS | 295.3 | 119.0 | 123.8 | 177.8 | 109.2 | 4.9 |
| SSF1210X | 1/2" CLASS 300 RF | | 314.3 | 128.6 | 133.4 | 195.2 | 124.5 | 5.8 |
| SS1110 | 3/4" CLASS 150 RF | | 295.1 | 119.0 | 123.8 | 173.0 | 99.1 | 5.6 |
| SS1110X | 3/4" CLASS 300 RF | | 314.2 | 103.1 | 133.3 | 192.0 | 116.8 | 7.3 |
| SS1010 | 1" CLASS 150 RF | | 298.2 | 120.5 | 125.3 | 169.7 | 88.9 | 6.4 |
| SS1010X | 1" CLASS 300 RF | | 310.9 | 126.9 | 131.6 | 179.3 | 96.5 | 8.3 |

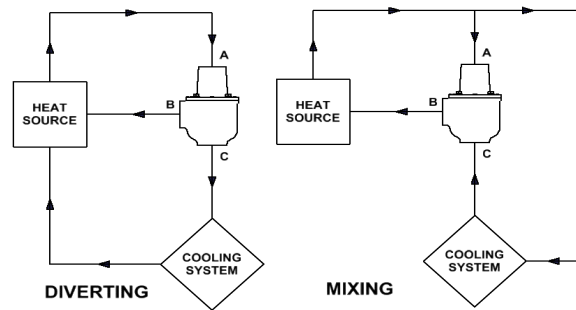
SOCKET WELD AND FLANGED VALVE MATERIAL: S=STEEL OR SS=STAINLESS ONLY (WEIGHTS ARE APPROXIMATE)



| Pressure Ratings | |
|--------------------|------|
| Material (Ported) | bar |
| A | 10.3 |
| AL | 10.3 |
| B | 12.4 |
| D | 15.5 |
| S | 46.2 |
| SS | 40.7 |
| Material (Flanged) | bar |
| S (Class 150) | 17.2 |
| SS (Class 150) | 15.5 |
| S (Class 300) | 46.2 |
| SS (Class 300) | 40.7 |

| Standard Service Kits | |
|--|---------------|
| MODEL | SEAL MATERIAL |
| 1000-XXX | Buna-N |
| 1000V-XXX | Viton |
| 1000E-XXX | Neoprene |
| REPLACE XXX WITH SET-POINT TEMPERATURE °F (One thermostat per valve) | |

Application Schematics



Consult FPE representative for further information

www.FPEvalves.com

EUROPE, MIDDLE EAST,
AFRICA, ASIA + PACIFIC
+44 1733 206 678
emeap@FPEvalves.com

AMERICAS
+1 262 548 6220
americas@FPEvalves.com

CHINA
+86 0519 8158 0102
china@FPEvalves.com

Copyright 2017 FPE.